

City of Sullivan Emergency Snow Routes

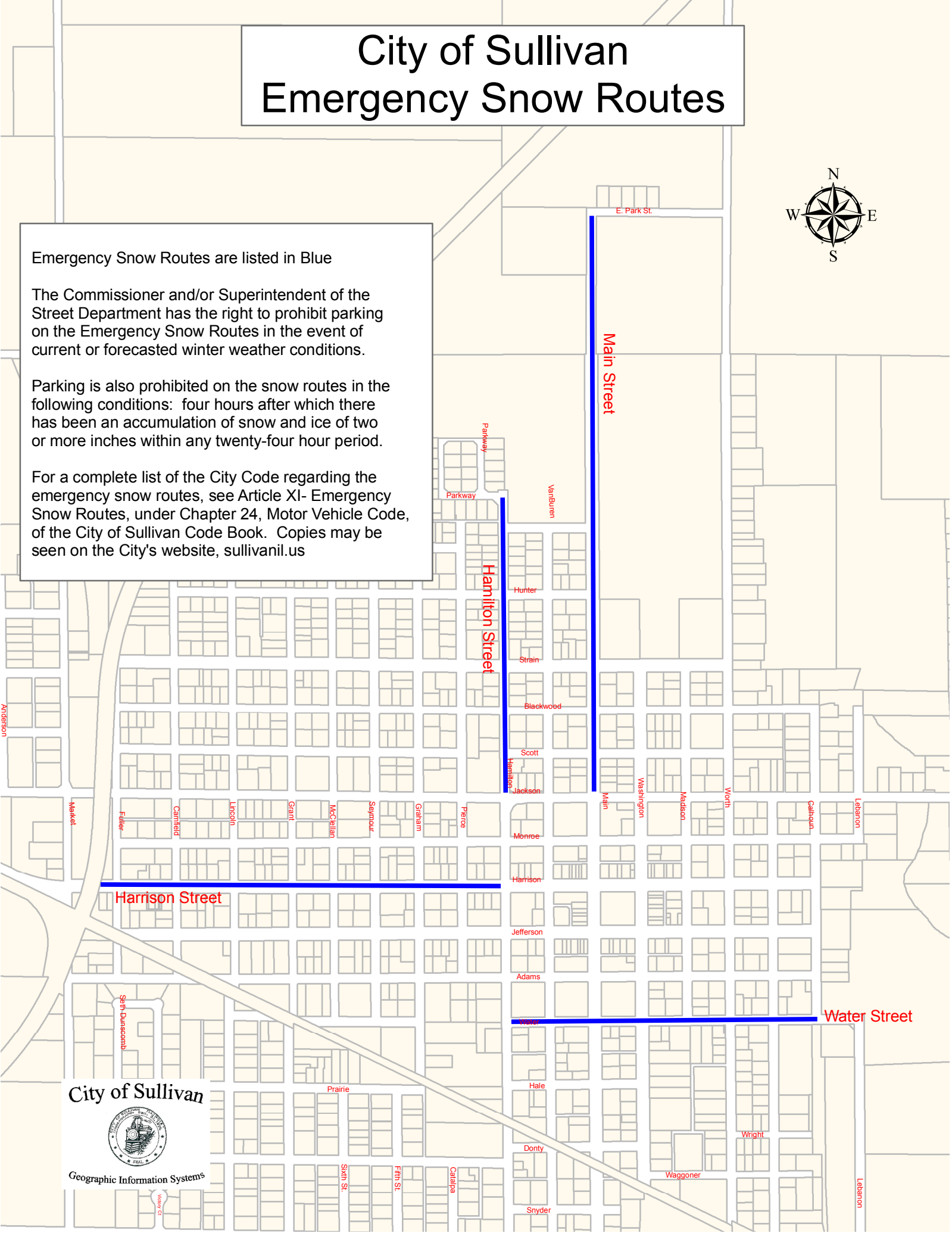


Emergency Snow Routes are listed in Blue

The Commissioner and/or Superintendent of the Street Department has the right to prohibit parking on the Emergency Snow Routes in the event of current or forecasted winter weather conditions.

Parking is also prohibited on the snow routes in the following conditions: four hours after which there has been an accumulation of snow and ice of two or more inches within any twenty-four hour period.

For a complete list of the City Code regarding the emergency snow routes, see Article XI- Emergency Snow Routes, under Chapter 24, Motor Vehicle Code, of the City of Sullivan Code Book. Copies may be seen on the City's website, sullivanil.us



City of Sullivan



Geographic Information Systems