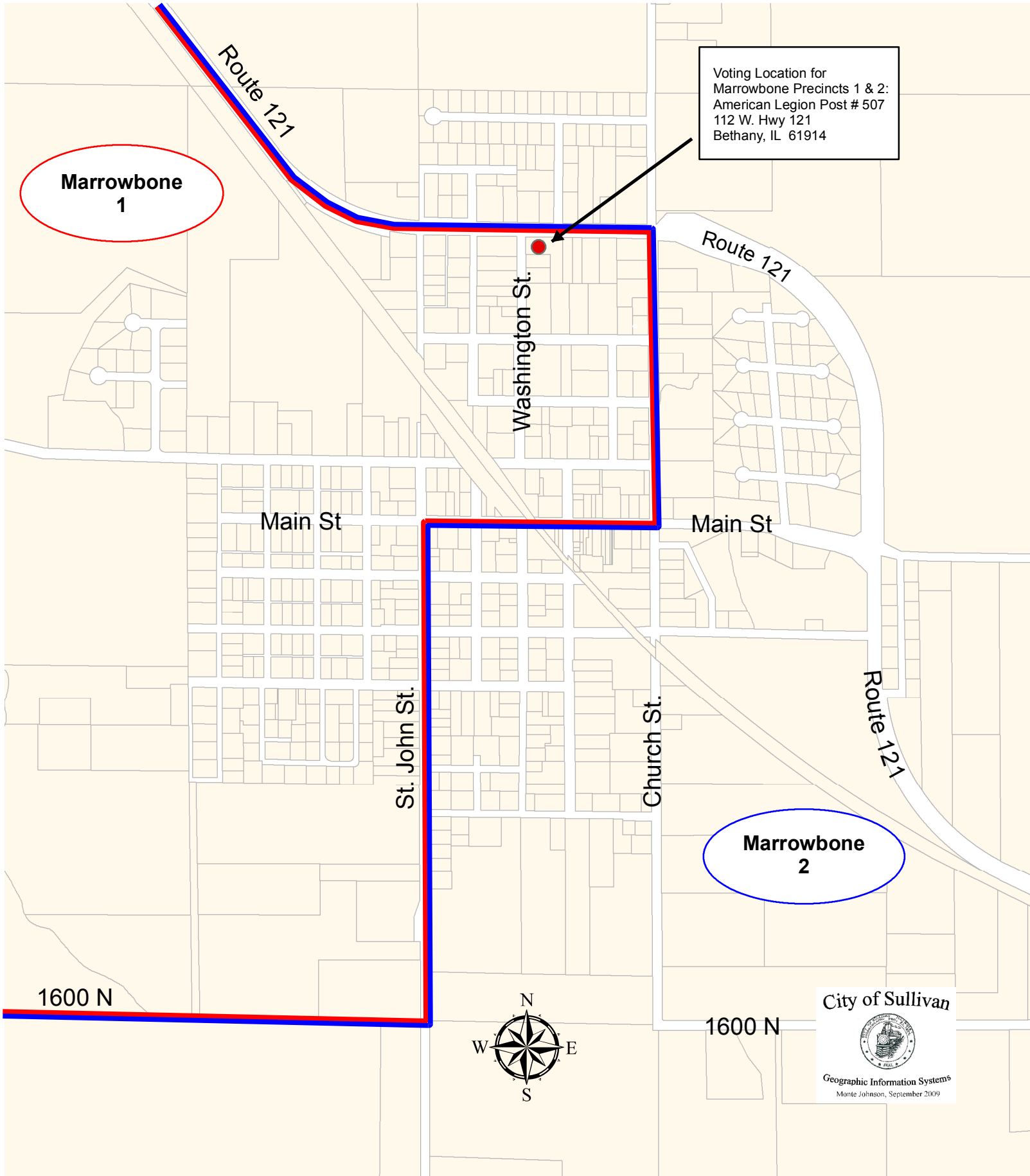


MARROWBONE TOWNSHIP

Detailed View of Bethany Moultrie County, Illinois



Voting Location for
Marrowbone Precincts 1 & 2:
American Legion Post # 507
112 W. Hwy 121
Bethany, IL 61914

Marrowbone
1

Marrowbone
2

City of Sullivan



Geographic Information Systems
Monte Johnson, September 2009